

# SETUP SHEET - WHEELCHAIR ACCESSIBLE MOUNT v2.0

## CENTER CABLE ROUTING MODEL

For use with Part Number : **MMFPSL\_\_ W204**  
 (Multiple part numbers available for specific Payment Terminal models)

### PRODUCT INCLUDES

#### FLEXIBLE ARM WITH ROTATING BASE (QTY.1)

#### COUNTER MOUNTING HARDWARE

(Qty.1) Under-counter round metal plate  
 (Qty.3) Screws, #10-32 x 1 1/2", socket flat head  
 (Qty.3) Screws, #10-32 x 2 1/2", socket flat head  
 (Qty.3) Flat Washers, #10  
 (Qty.3) Lock Nuts, #10-32

#### MOUNTING PLATE FOR PAYMENT TERMINAL (QTY.1)

Related hardware:  
 (Qty.4) Screws, #8-32 x 1/4" button socket head  
 (Qty.1) Square shaped shim (For Model # **MMFPSL80W204** only)

#### DETACHABLE PULL-HANDLE (QTY.1)

Related hardware:  
 (Qty.2) #8-32 x 1/4" Screws  
 (Qty.1) Square shaped shim (For Model # **MMFPSL80W204** only)

NOTE: Additional handles for left and/or right side placement on the payment terminal plate can be purchased separately from your reseller or online at [www.mmfps.com](http://www.mmfps.com), refer to P/N: MMFWKIT0104

#### LOCKING HARDWARE FOR PAYMENT TERMINAL

(Qty.1) Metal Retaining L-Bracket  
 (Qty.2) #6-32 x 1/4" Screws  
 (Qty.1) Locking Metal Cover  
 (Qty.2) Keys

#### BASE COVER KIT

(Qty.2) Plastic base cover caps  
 (Qty.2) Side plugs  
 (Qty.1) Rubber Plug  
 (Qty.2) Screws, #6-32 x 1/4" button socket head

#### ALLEN WRENCHES PROVIDED

(QTY.1) WRENCH, 5/64" HEX for #6 screws

(QTY.1) WRENCH, 3/32" HEX for #8 screws

(QTY.1) WRENCH, 1/8" HEX for #10 screws

(QTY.1) WRENCH, 5/32" HEX for 1/4" screws

#### Warnings / Safety Notes

- This product should only be used while securely bolted onto a counter.
- Do not place hands or fingers in between any of the moving parts of the mount.
- Mounting hardware is provided for counters up to 2 inches in thickness. If counter surface is thicker, customer is responsible for finding appropriate sized hardware.
- Do NOT use wood or self-tapping screws.
- Tension on pivot joints may need to be adjusted periodically as routine maintenance.

#### 1 Select mounting surface

Select a flat surface leaving at least 1 inch of clearance space from the edge of the counter. Use drill template provided for drilling the three (3) mounting holes and center core opening.

#### 2

**Locate front of unit**  
 Align the rotational guiding screw head (circled) with the front of the arm.



#### 3 Firmly secure mount

Rotate the top of the round base plate until the notched portion exposes each of the three (3) mounting hole openings.



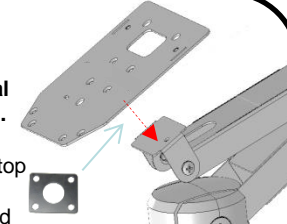
Place the UNDER-COUNTER METAL PLATE under the counter and secure with hardware provided as part of the **COUNTER MOUNTING HARDWARE**.

Disclaimer: Two (2) sets of screw lengths are provided depending on the surface thickness. If counter surface is thicker than 2 inches, customer is responsible for finding appropriate length hardware.

#### 4

#### Attach Terminal Mounting Plate.

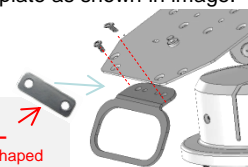
Align the four screw holes on top of the plate with pivot bracket and fasten using the four (4) #8-32 x 1/4" screws provided.



**Only for Model # MMFPSL80W204**— Insert the square-shaped shim provided in the kit (shown below) between the plate and arm.

#### 5 Install Pull-Handle

Fasten with the two #8-32 x 1/4" screws provided from the top and through the terminal mounting plate as shown in image.



**For Model # MMFPSL80W204 only**— Insert the rectangular-shaped shim provided in the kit (shown below) between the plate and Pull-handle.

NOTE: There are slots available on the right-left side of the plate for additional handles (Sold separately – Refer to P/N:MMFWKIT0104)

#### 6

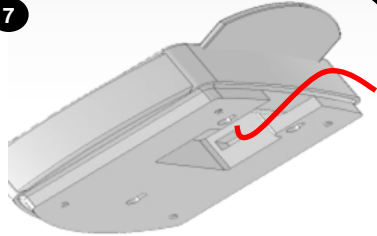
#### Route and secure cabling

Secure cabling by routing through the channels of the arm and through the counter's center core opening. Allow enough cable slack to expand the arm to the fullest extension. Fasten with provided cable ties where needed.



# SETUP SHEET - WHEELCHAIR ACCESSIBLE MOUNT v2.0 CENTER CABLE ROUTING MODEL

7



**Attach cables to Payment Terminal**  
Make the necessary cable connections to the terminal ports.

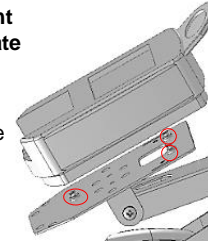
BEFORE NEXT STEP



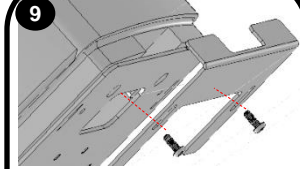
**For Verifone® MX925 units ONLY** - the right rubber foot located in the back of the unit close to the middle key-shaped hole (as pictured) may need to be relocate slightly to the right for smooth engagement to the plate.

8 **Mount payment terminal to plate**

Align the 3 key-shaped holes on the bottom of the terminal to the pins on the stand's mounting plate. Apply downward pressure on terminal and slide down for a snug attachment.

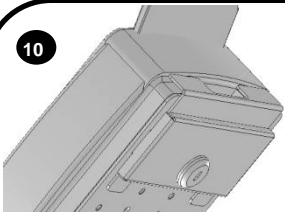


9



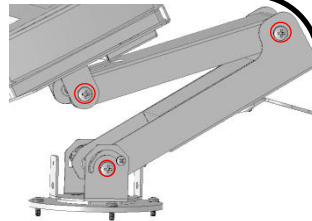
**Secure terminal with retaining L-Bracket**  
Re-check engagement of payment terminal to plate. Fasten with two (2) #6-32 x 1/4" screws provided.

10



**Lock terminal with key-locking cover**  
Align cover over the rectangle openings next to the L-Bracket. Turn the key 90 degrees to secure lock.

11



**Optional - Tighten or loosen each pivot joint to get desired tension**

To tighten the bolts on any of the joints highlighted in the image above. Follow the steps detailed on Step 11A.

11A **Adjusting Tension on Pivot Joints**

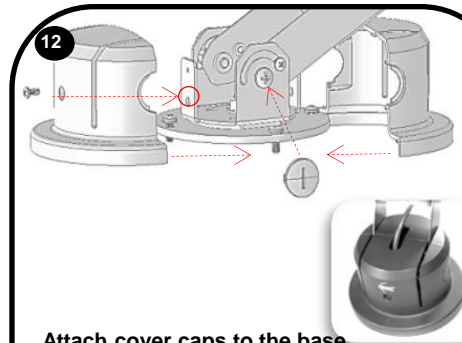
*Tools Needed:*

- 5/32 Allen Wrench (provided)
- 7/16 Box Wrench (not included)

For periodic maintenance,  
On lower joint: remove base cover caps  
On top joints: open plastic screw cover caps

1. Loosen inside jam nut with 7/16 box wrench
2. Firmly hold 5/32 Allen Wrench on Button Head Screw and turn to desired friction  
-To tighten: **Clockwise**  
-To loosen: **Counter-clockwise**
3. While applying pressure on the button head screw with the Allen Wrench, turn inside nut with the Box Wrench to lock in place.

12



**Attach cover caps to the base**

- Snap the two base cover caps together around the base by aligning the pins on the outer edges of the caps.
- Place the side plugs on each side and twist (using the thumb portion of the keys provided) to secure in place.
- Fasten with the two (2) #6-32 x 1/4" screws
- Press the rubber cover on top opening – only if not using the center opening for cable routing)

These components are provided as part of the **BASE COVER KIT**.

Drill Template

