


USB Interface with Serial Emulation



USB Interface

P/N#2261998USBA2-XX: USB with Serial Emulation Interface KIT (Includes Power Supplies & USB Host Cables)

P/N# 641-2575-00: Cash Drawer Power Supply (12V dc)

P/N# 641-25BX-00: USB Host Cable

GETTING STARTED:

1 Load the MMF USB Serial Emulation Driver into the host computer unit.

Download the **MMF USB Serial Emulation Driver** file from our website by opening the zipped file
 Website address: <http://www.mmfpos.com/drivers>

- » Open folder named "**MMF USB Serial Emulation Driver**"
- » Select the file named "**mchpcdc.inf**"
- » Save in 'C:\Program Files' or 'Desktop'

2 Connect the Power Supply (12VDC / .8 Amp)

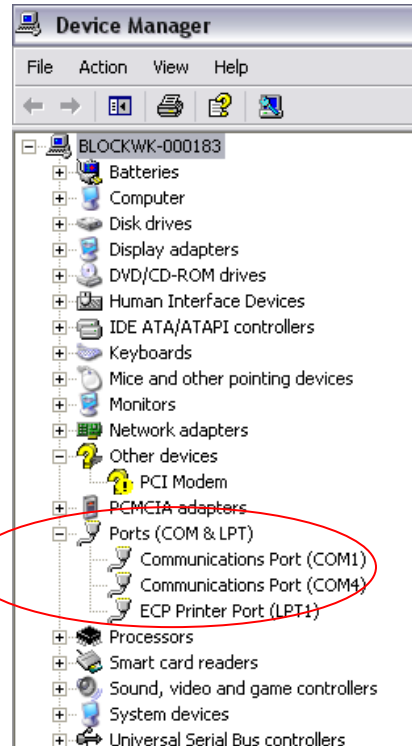
Plug the small plug tip to the interface power port in the back of the cash drawer interface as illustrated in Figure 1. Plug the power adapter end into a 120 Volt AC Recepticle. Always connect the power supply before the USB Cable.

3 Connect USB Cable

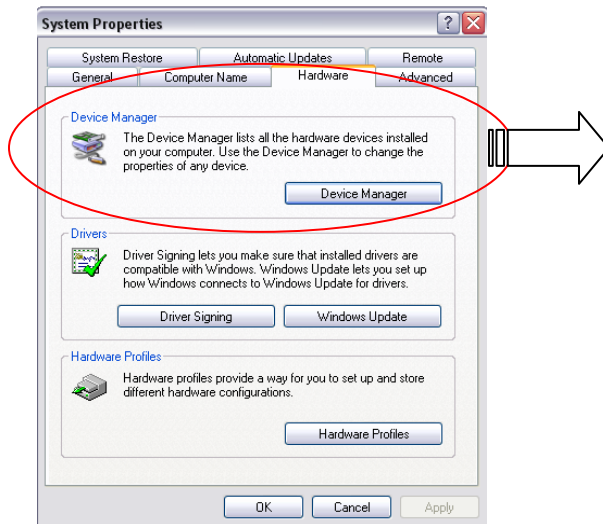
Plug the Type B connector end to the USB Port of the interface as illustrated in Figure 1 and the Type A Connector to the USB port of the Host Computer.

4 Check which COM Port the Host computer has assigned as the Virtual COM Port

- »Go to **START** Menu
- »Select **Control Panel**
- »Click on the **System** Icon
- »Select the **Hardware** Tab
- »Click on **Device Manager** to view COM Port assigned.



NOTE: On this particular computer COM4 has been automatically assigned as the virtual com port. This is the com port designation you will use to test the interface functionality (STEP 5) and for your POS software setup.



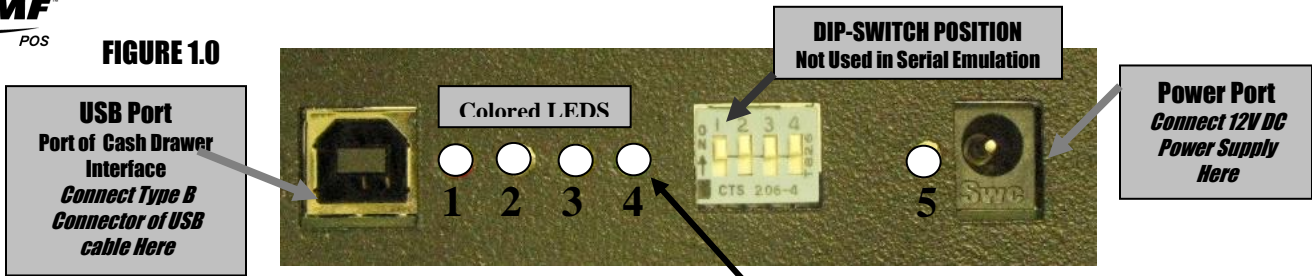
5 Test Functionality of Interface

Follow the steps detailed below for 'Serial Emulation Test Procedure'.

6 Install OPOS Drivers

Follow the steps detailed below for 'MMF OPOS Drivers Installation'.

FIGURE 1.0



This light should not be ON at any time

TABLE 2.0

LED NAME	STATE		
	ON		OFF
	Solid	Intermittent	
LED-1	USB Cable Connected		No USB Cable
LED-2	Cash Drawer Closed	USB Communication Transmit	Cash Drawer Open
LED-3	Solenoid in position and ready to kick drawer open		Solenoid kicked drawer open
LED-4	Port Powered- Not Recommended 1st: Plug USB Cable 2nd: Plug Power Adapter		Adapter Powered 1st: Plug Power Adapter 2nd: Plug USB Cable
LED-5	Power Supply Connected		No Power Supply

NOTE 1
Port Powered: Draws power from the computer, which will not provide enough power to operate cash drawer's latch mechanism.

NOTE 2:
Adapter Powered: Draws power from the provided power supply adapter.

Serial Emulation Test Procedures

Test from Command Prompt:

- Go to Start » Programs » Accessories » Command Prompt
- Configure the COM port settings by typing:
mode com1:9600,n,8,1 <enter>
(If Device manager created COM4 or any other COM port (1-9) as your virtual com port, then use that number, i.e. "mode com4:9600,n,8,1")

The computer should return the following

```

C:\Documents and Settings\igomez>mode com1:9600,n,8,1
Status for device COM1:
-----
Baud:          9600
Parity:        None
Data Bits:     8
Stop Bits:     1
Timeout:       OFF
XON/XOFF:     OFF
CTS handshaking: OFF
DSR handshaking: OFF
DSR sensitivity: OFF
DTR circuit:   ON
RTS circuit:   ON
    
```

- To test the cash drawer, type the following:
copy con com1: <enter>
A <enter>
Press 'F6' Key <enter>

(If Device manager created COM4 or any other COM port (1-9) as your virtual com port, then use that number, i.e. "copy con com4:")

The drawer should open at this point and the PC will return the following

```

C:\Documents and Settings\testp>copy con com1:
AA
^Z
1 file(s) copied.
C:\Documents and Settings\testp>
    
```

An alternative test command program:

- Configure the COM port settings by typing:
mode com1:9600,n,8,1 <enter>
(If Device manager created COM4 or any other COM port (1-9) as your virtual com port, then use that number, i.e. "mode com4:9600,n,8,1")
- Type: **echo>com1** <enter>
The drawer should open at this point
(If Device manager created COM4 or any other COM port (1-9) as your virtual com port, then use that number, i.e. "echo> com4")
- Close drawer. To open again, Press F3.
Cash drawer should open and computer should reply with: **echo>com1**

If the drawer fails to open using the test command program, refer to the troubleshooting guide. If drawer opens successfully, install your POS software or OPOS Drivers, if needed. If the cash drawer fails to open with the POS Software, contact your software manufacturer for further assistance.

MMF OPOS DRIVER V1.9 INSTALLATION

STEP 1

Install MMF OPOS Driver V1.13, available under: <http://www.mmfpos.com/drivers>

ⓘ The user installing the MMF cash drawer software and configuring the cash drawer devices on Windows 2000 and Windows XP is required to have Administrator Rights. Once the software is installed, all users with normal rights can use it.

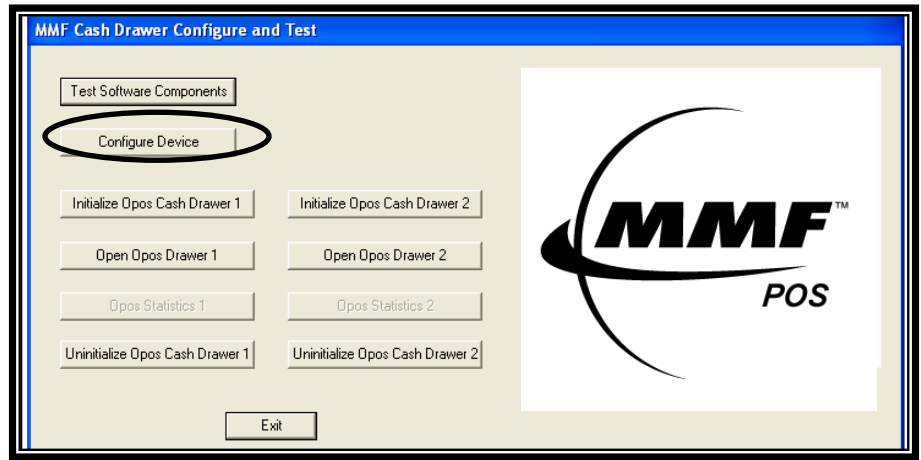
STEP 2

To install the driver run the file: Setup.exe. The program will ask you to unzip, click Unzip.
 » After download is completed, go to "Start" Menu
 » Go to "All Programs"
 » Select the "MMF Cash Drawer" program
 » Select the "Configure and Test" program

STEP 3

Open the "Configure and Test" program and click on "Configure Device". (See Figure 1.2)

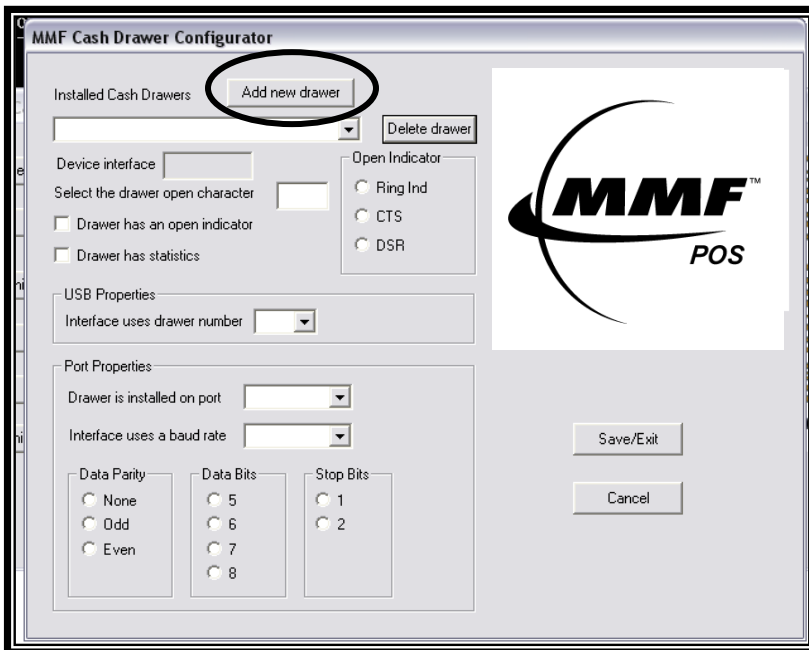
FIGURE 1.2



STEP 4

To configure drawer - click on "Add new drawer" (See Figure 1.3). A window will appear asking you to enter a name for your cash drawer, name it: **Cash_Drawer#1** (See NOTE). Select the option of "Standard Serial Interface with Drawer Status" as the Cash Drawer Interface (See Figure 1.4) and click "OK" to save settings.

FIGURE 1.3



NOTE: The name **Cash_Drawer#1** is case and character sensitive.

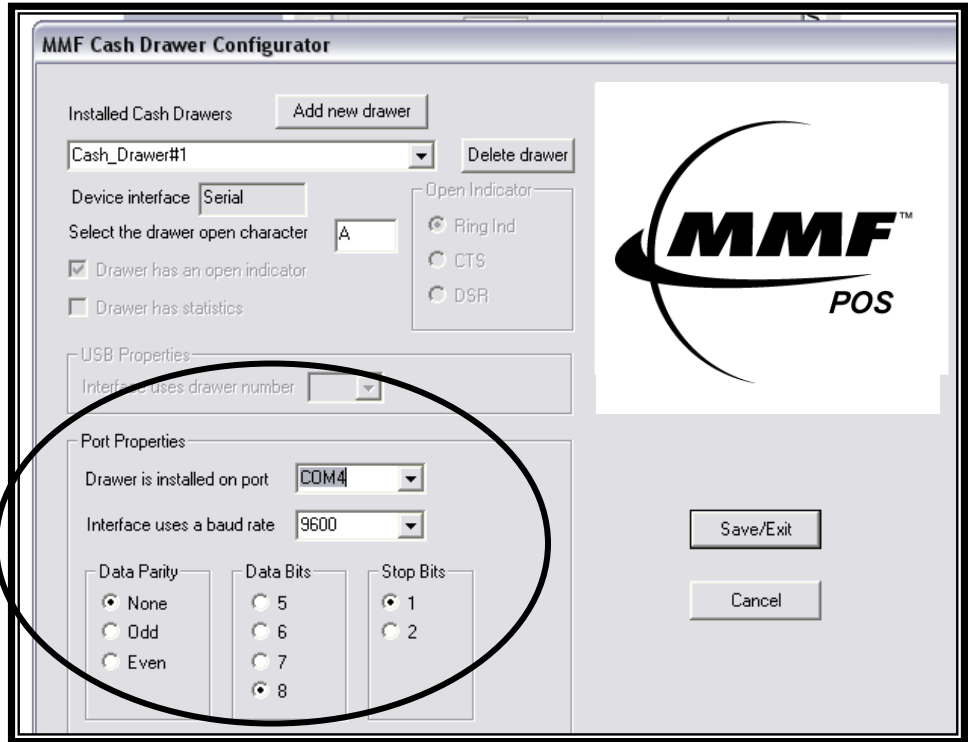
FIGURE 1.4



STEP 5

Under 'Port Properties' choose the Port which Device Manager has assigned as the Virtual COM Port. In this example, Port 4 was the COM Port assigned.

Then, click on Save/Exit



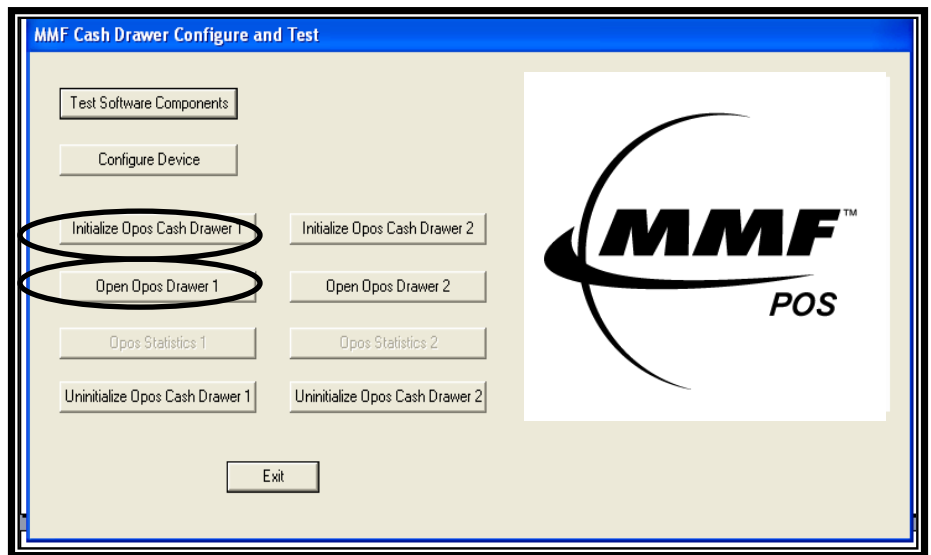
STEP 6

To test drawer - Click on "Initialize OPOS Drawer 1" then, click on "Open OPOS Drawer 1" (See Figure 1.4 the following message will be displayed:



STEP 7

Click "OK" to the above message and then manually close the cash drawer. When the drawer is completely closed the following message will be displayed:



STEP 8

Click on "Un-initialize OPOS Drawer 1" and the test is complete. Repeat only if necessary.