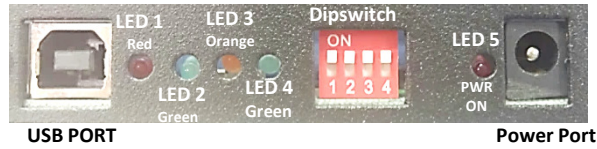




USB SERIAL EMULATION CASH DRAWER INTERFACE SETUP SHEET

P/N: 2261998USBA2XX: Interface, USB cable and power supply are included



STEP 1

Download the MMF USB Serial Emulation Driver

- Visit website: <http://www.mmfpos.com> > Tech Support
- Open File named "USB Serial Emulation Driver"
- Select the file named "mchpcdc.inf"
- Save in 'C:\Program Files' or 'Desktop'

STEP 2

Connect Power Supply to cash drawer

Always connect the power supply before the USB Cable.
NOTE: LED #5 (RED) should be ON at this time.

STEP 3

Connect USB Cable to cash drawer

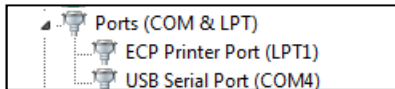
Plug the Type B connector end to the USB Port of the cash drawer and the Type A Connector to the USB port of the Host Computer.

NOTE: LED #1 and #5 should be ON at this time.

STEP 4

Verify Virtual COM Port assignment

- Go to START Menu
- Select CONTROL PANEL
- Click on DEVICE MANAGER to view COM port number



STEP 5

Test Functionality of Interface from Command Prompt

- Go to Start Menu
- Control Panel
- Command Prompt
- Configure the COM port settings
- Type: **mode com1:9600,n,8,1 <Press enter>**

(If Device manager created COM4 or any other COM port (1-9) as your virtual com port, then use that number, i.e. "mode com4:9600,n,8,1" and "echo> com4"))

- Then type: **echo>com1 <Press enter>**
The drawer should open at this point

```

C:\> Command Prompt

Status for device COM4:
-----
Baud:          9600
Parity:        None
Data Bits:     8
Stop Bits:     1
Timeout:       OFF
XON/XOFF:     OFF
CTS handshaking: OFF
DSR handshaking: OFF
DSR sensitivity: OFF
DTR circuit:   ON
RTS circuit:   ON

U:\>echo>com4
  
```

STEP 6 (Optional- Only if OPOS Drivers are required)

Download the [USB OPOS Driver V1.13](#) and Functional test file from the www.mmfpos.com website

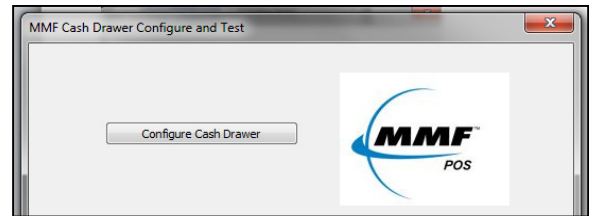
- Open folder named "MMF OPOS Driver - Win10.exe"
- Click on "Run" and follow the automatic setup
- The application will open, proceed to STEP 7

STEP 7

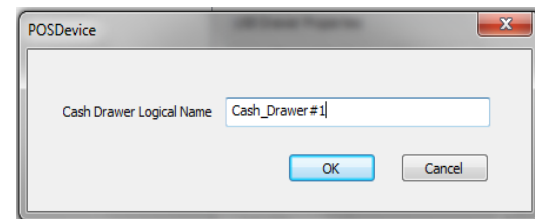
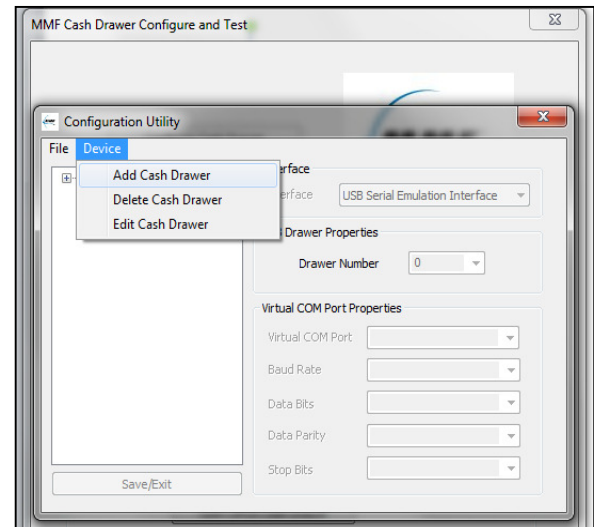
Configure Cash Drawer

- Click on "Configure Cash Drawer".

A window named MMF Cash Configure and Test will appear.

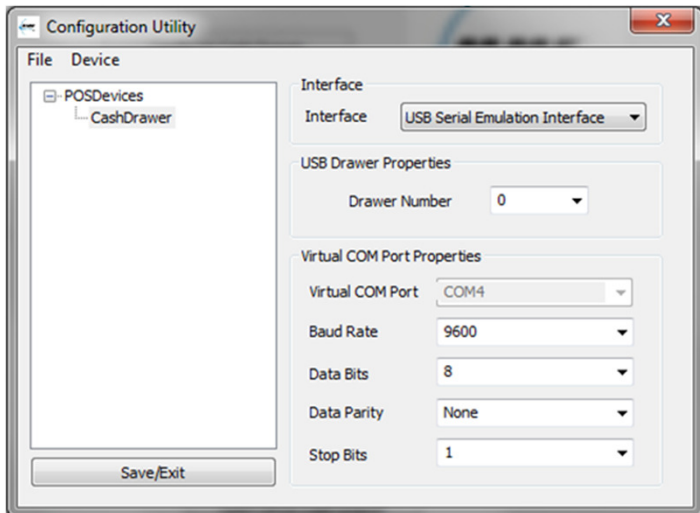


- Click on **Device** Menu
- Select **Add Cash Drawer**
- Write cash drawer logical name as: **Cash_Drawer#1**
- Click **OK**



NOTE: The name **Cash_Drawer#1** is case and character sensitive. Please type it exactly as shown.

- Select **Interface:** USB Serial Emulation Interface
- The program will automatically populate the Virtual COM Port properties
- Click, **Save/Exit**



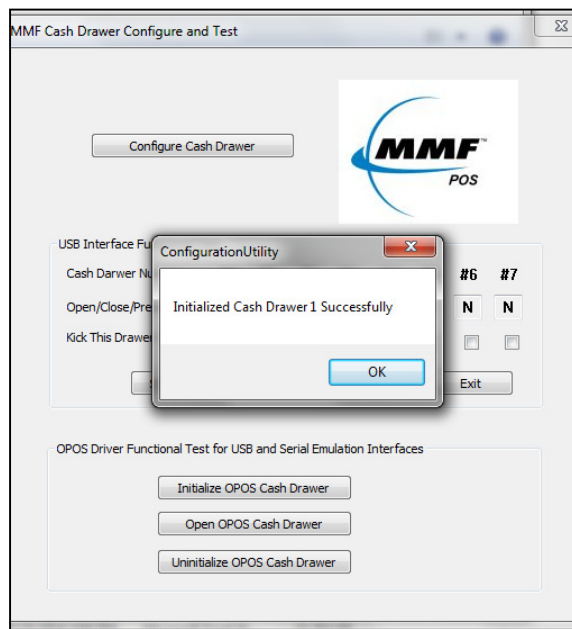
STEP 7
Initialize OPOS Drivers

- Click **Initialize OPOS Cash Drawer**

You should see a result box stating:
'Initialized Cash Drawer 1 Successfully'

- Click **Open OPOS Cash Drawer**

NOTE: Do not assign two (2) USB interface cash drawers within the same system with the same cash drawer number.



TROUBLESHOOTING TIPS

- Make sure the power supply adapter is connected **before** the USB cable and that LED#4 (GREEN) is OFF.
- Check Dipswitch setting correlate to the name of the cash drawer. If you decide to change dipswitch settings, disconnect the power cable and USB cable from the interface, change dipswitch pins and reconnect all the cables per STEP 2 and STEP 3 of this setup sheet.
- Make sure that under 'USB Properties' the number in the dropdown is the same as the number selected for the drawer on the dipswitch.
- Switch to another USB port in the computer, if necessary.

LED NAME	STATE		
	ON		OFF
	Solid	Intermittent	
LED-1	USB Cable Connected		No USB Cable
LED-2		USB Communication Transmit	Cash Drawer Open
LED-3	Cash Drawer Closed		Solenoid kicked drawer open
LED-4	Port Powered- Not Recommended 1st: Plug USB Cable 2nd: Plug Power Adapter	See Note 1	Adapter Powered 1st: Plug Power Adapter 2nd: Plug USB Cable
LED-5	Power Supply Connected		No Power Supply

For replacement parts, refer to these part numbers:

Power Supply (12Vdc)
P/N# 641-2575-00

USB Host Cable
P/N# 641-25BX-00

NOTE 1
Port Powered: Draws power from the computer, which will not provide enough power to operate cash drawer's latch mechanism.

NOTE 2:
Adapter Powered: Draws power from the provided power supply adapter.

USB Serial Emulation Setup Sheet
531920900
12/14/2015