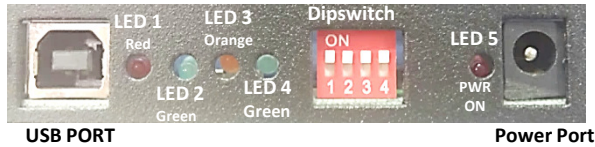




USB CASH DRAWER INTERFACE SETUP SHEET

P/N: 2261998USBA1XX: USB Interface, USB cable and power supply are included



STEP 1

Select Cash Drawer ID Number

Identify the drawer by setting the pins on the dipswitch per the options below:

MMF recommends selecting cash drawer ID #1

| SWITCH SETTINGS | | DRAWER ID NUMBER | | | | | | | |
|-----------------|-----|------------------|-----|-----|-----|-----|-----|-----|-----|
| | | 0 | 1 | 2 | 3 | 4 | 5 | 6 | 7 |
| DIP SWITCH | SW1 | ON | OFF | ON | OFF | ON | OFF | ON | OFF |
| | SW2 | ON | ON | OFF | OFF | ON | ON | OFF | OFF |
| | SW3 | ON | ON | ON | ON | OFF | OFF | OFF | OFF |
| | SW4 | RESERVED | | | | | | | |

STEP 2

Connect Power Supply to cash drawer

NOTE: Always connect the power supply before the USB Cable.

NOTE: LED #5 (RED) should be ON at this time.

STEP 3

Connect USB Cable to cash drawer

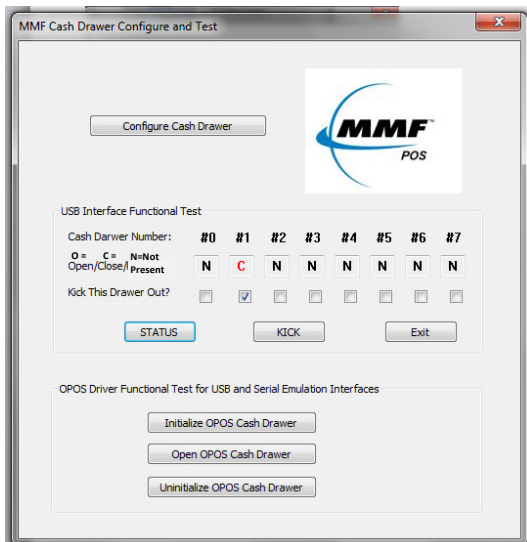
Plug the Type B connector end to the USB Port of the cash drawer and the Type A Connector to the USB port of the Host Computer.

NOTE: LED #1,2,3, and #5 should be ON at this time.

STEP 4

Download the [USB Drivers for Functional Test and OPOS V1.13](http://www.mmfpos.com) file from the www.mmfpos.com website

- Click on "Run"
- Follow through the automatic setup
- The application will open as shown below, proceed to STEP 5

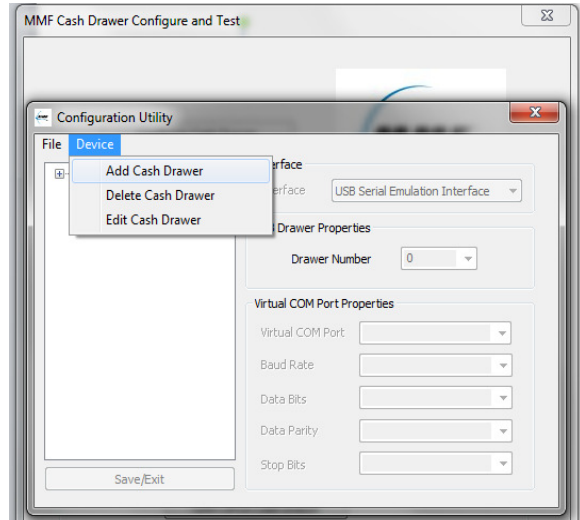


STEP 5

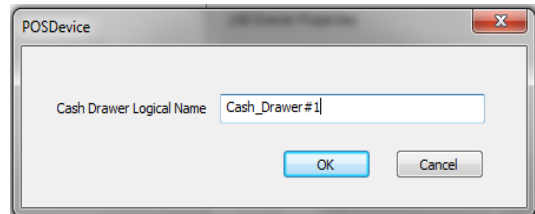
Configure Cash Drawer

- Click on "Configure Cash Drawer"

A window named 'MMF Cash Drawer Configure and Test' will appear.

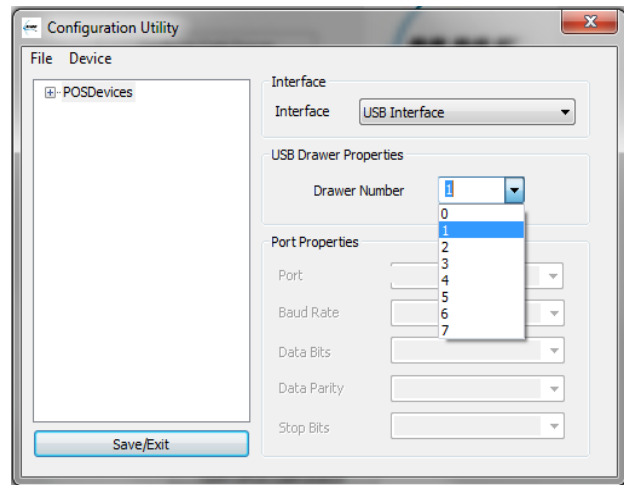


- Click on **Device** Menu
- Select **Add Cash Drawer**
- Write cash drawer logical name as: **Cash_Drawer#1**
- Click **OK**



NOTE: The name **Cash_Drawer#1** is case and character sensitive. Please type it exactly as shown.

- Select **Interface:** USB Interface
- Under **USB Drawer Properties**, select Drawer Number from the drop down menu. Select #1
- Click, **Save/Exit**



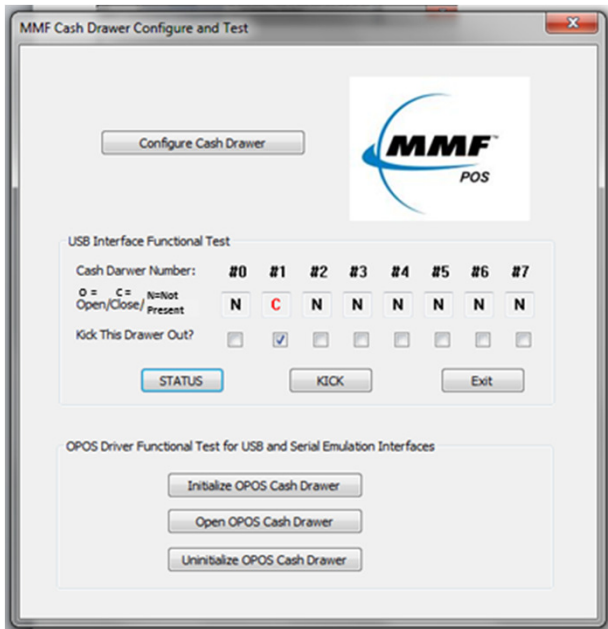
STEP 6

Test Functionality of Interface

- Click on **STATUS**, a letter character (O, C, or N) should appear in the result box under the cash drawer ID number given to the unit.

N : Drawer Not Present
C : Closed
O : Opened

- Make sure Cash Drawer is closed and click '**KICK**' to open the cash drawer, when it opens the letter 'O' should appear in the result box.
- Repeat if necessary.

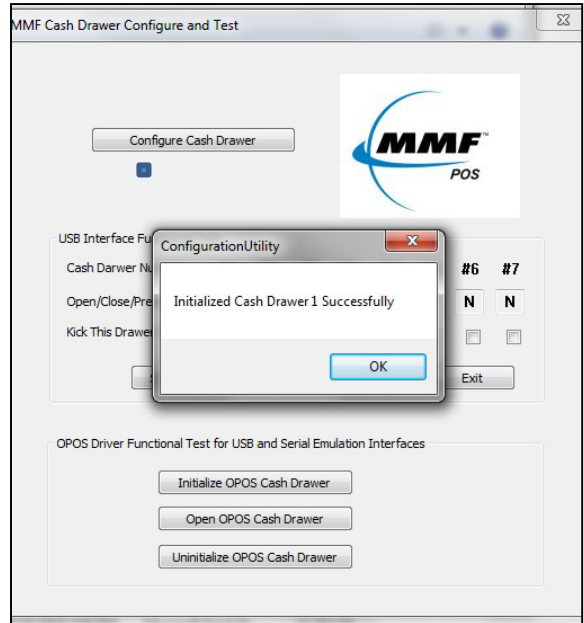


STEP 7 (optional)

Initialize OPOS Drivers

- Click **Initialize OPOS Cash Drawer**
 - You should see a result box stating: '**Initialized Cash Drawer 1 Successfully**'
- Click **Open OPOS Cash Drawer**

NOTE: Do not assign two (2) USB interface cash drawers within the same system with the same cash drawer number.



TROUBLESHOOTING TIPS

- Make sure the power supply adapter is connected **before** the USB cable and that LED#4 (GREEN) is OFF.
- Check Dipswitch setting correlate to the name of the cash drawer. If you decide to change dipswitch settings, disconnect the power cable and USB cable from the interface, change dipswitch pins and reconnect all the cables per STEP 2 and STEP 3 of this setup sheet.
- Make sure that under 'USB Properties' the number in the dropdown is the same as the number selected for the drawer on the dipswitch.
- Switch to another USB port in the computer, if necessary.

| LED NAME | STATE | | |
|----------|--|----------------------------|--|
| | Solid | Intermittent | OFF |
| LED-1 | USB Cable Connected | | No USB Cable |
| LED-2 | Cash Drawer Closed | USB Communication Transmit | Cash Drawer Open |
| LED-3 | Solenoid in position and ready to kick drawer open | | Solenoid kicked drawer open |
| LED-4 | Port Powered- Not Recommended 1st: Plug USB Cable 2nd: Plug Power Adapter | See Note 1 | Adapter Powered 1st: Plug Power Adapter 2nd: Plug USB Cable |
| LED-5 | Power Supply Connected | | No Power Supply |

For replacement parts, refer to these part numbers:

Power Supply (12Vdc)
P/N# 641-2575-00

USB Host Cable
P/N# 641-25BX-00

NOTE 1
Port Powered: Draws power from the computer, which will not provide enough power to operate cash drawer's latch mechanism.

NOTE 2:
Adapter Powered: Draws power from the provided power supply adapter.